



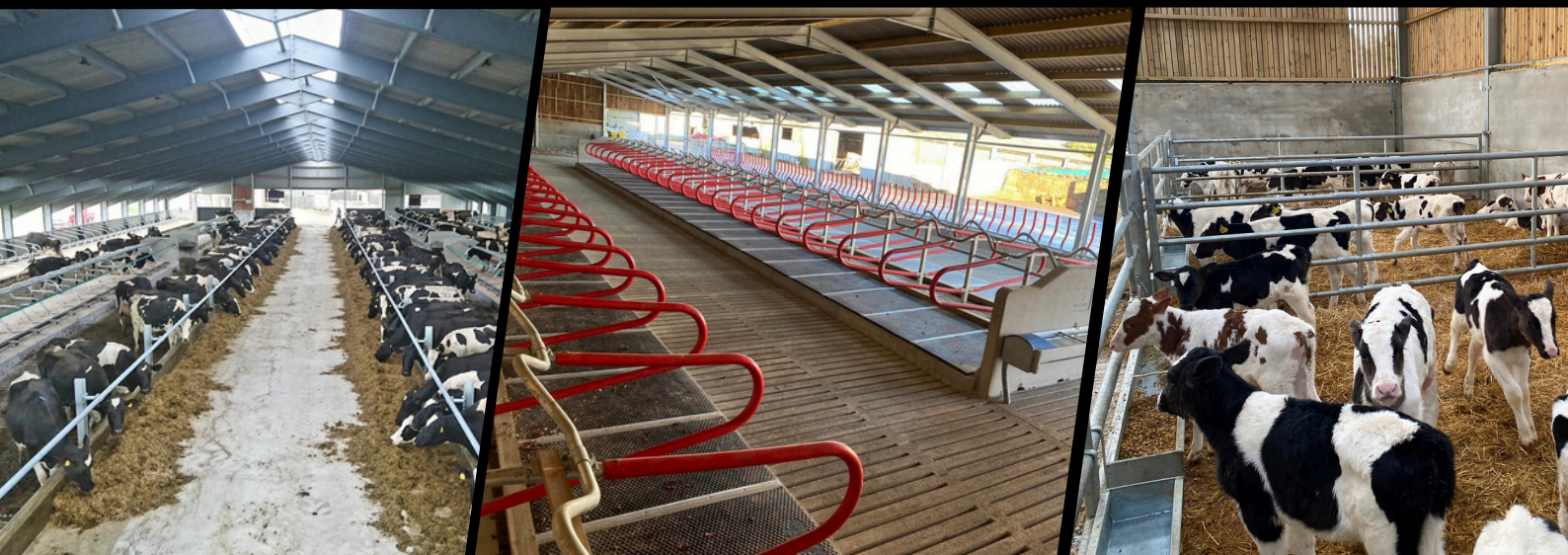
OUR WEBSITE

MOORE CONCRETE
QUALITY PRECAST SOLUTIONS



SUSPENDED FLOORING SYSTEMS

Including **slats, cubicles, gangs, support beams** and **passage covers**



WWW.MOORE-CONCRETE.COM







SALES@MOORE-CONCRETE.COM | 028 2565 2566

SUSPENDED FLOORING SYSTEMS

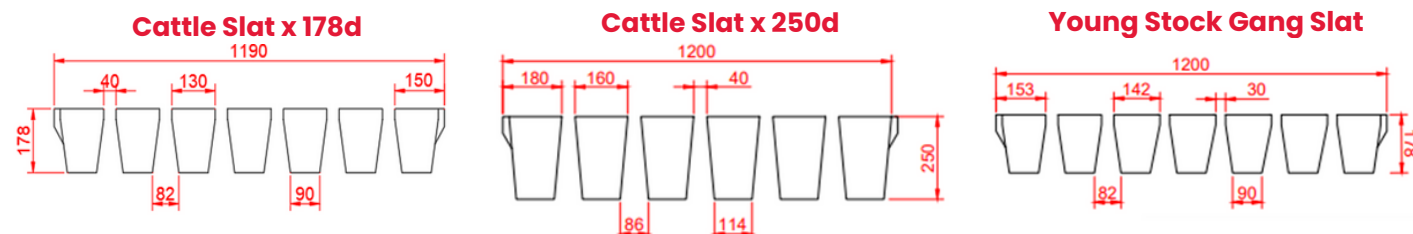
Moore Concrete manufacture a comprehensive range of precast concrete products for suspended flooring used in livestock accommodation. Widely regarded as a more economical and less labour intensive alternative to traditional straw bedding, suspended floors are particularly beneficial as animals housed on cubicles and slats typically require up to 50% less space than those kept on straw yards. Each product is carefully designed with a focus on animal comfort and improved welfare, helping farmers create cleaner, more efficient, and welfare-friendly housing environments.

Cattle Slats

Suitable for both beef and dairy cattle, a wide range of slats are available with varying gap widths and lengths to suit different housing layouts. Designed with an optimal space-to-surface ratio and a steep release angle, they promote cleaner livestock by allowing slurry to drain quickly. Various axle loadings are available up to 10 tonnes to accommodate modern agricultural machinery.

Slat Type	Width (mm)	Depth (mm)	Gap (mm)	Length (mm)	Loading Capacity	
Cattle Slat (7 ribs x 178d)	1190	178 (7")	40	1220 (4') - 3960 (13') in 150mm increments		Up to 4.5 ton axle loading Up to 8.0 ton axle loading <small>in shorter lengths</small>
				4115 (13'6") - 4572 (15') in 150mm increments		Up to 4.5 ton axle loading
Cattle Slat (6 ribs x 250d)	1200	250 (10")	40	2745 (9') - 4875 (16') in 305 increments		Up to 4.5 ton axle loading
				5000 (16'4")		Up to 10 ton axle loading
Young Stock Gang Slat (7 ribs x 178d)	1200	178 (7")	30	2440 (8') - 3960 (13') in 150mm increments		Up to 4.5 ton axle loading Up to 6 ton axle loading
				4115 (13'6") - 4572 (15') in 150mm increments		Up to 4.5 ton axle loading

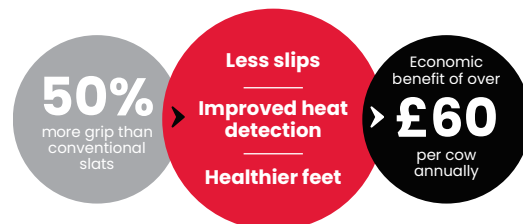
CE Manufactured to EN 12737 & 13747



SUREFOOT™

Slip Resistant Slats

All our slats are available with our SUREFOOT™ Slip-Resistant finish. See our **SUREFOOT™ brochure** for more details.



Survey comparing performance of cows housed on SUREFOOT™ Slats to KPI's from the UK National Dairy Herd*

Increased Cow Longevity

Age at exit by lactation length was **3.7** for cows housed on SUREFOOT™ Slats, compared to the National Herd inventory at 3.5.

Reduction in Methane

12 less followers were required when cows were housed on SUREFOOT™ Slats, resulting in an overall reduction of **485kg** methane per year. In context a lactating cow produces 57kg methane per year.

Reduction in Ammonia

NARSES, the UK Ammonia Inventory Model was used to compare emissions from both the National Herd and SUREFOOT™ Survey, specifically related to a reduction in the number of replacements.

Modelling determined a **4.6%** reduction in ammonia per annum with cows on a SUREFOOT™ System compared to that of the national herd.

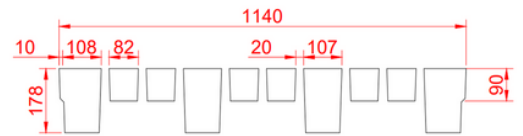
Cows housed on SUREFOOT™ Slats produced an average of 9550 kg of milk, compared to that of the National Herd at 9348 kg. Further modelling showed a reduction of **6.1%** in ammonia per litre of milk.


Survey and results compiled in conjunction with Queen's University Belfast and the Agri-Food and Biosciences Institute (AFBI).

*Key Performance Indicators for the UK national dairy herd. A study of herd performance in 500 Holstein/Friesian NMR recorded herds for the year ending 31 August 2021. <https://cdn2.assets-servd.host/craft-web/production/NMR500Herds-2021Final.pdf>

Multi-Purpose Gang Slats

Multipurpose slats are designed with narrower gaps, making them suitable for sheep, cows, calves, and pigs.




Slat Type	Width (mm)	Depth (mm)	Gap (mm)	Length (mm)	Loading Capacity	
Multi-purpose Slat (10 ribs x 178d)	1140	178 (7")	20	2440 (8') - 3960 (13') in 305mm increments		Up to 2.5 ton axle loading

Straw Bedding Gang Slats

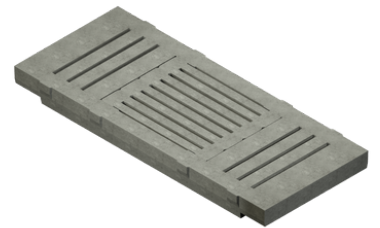
Straw bedding slats are designed with a **15mm gap** and enhanced strength to support machinery used for removing soiled straw. Commonly used in calving pens and areas housing young or smaller stock on straw, the narrow gap helps prevent straw from falling into the slurry tank below.



Slat Type	Width (mm)	Depth (mm)	Gap (mm)	Length (mm)	Loading Capacity	
Straw Bedding (8 ribs x 178d)	1200	178 (7")	15	2135 (7') - 4572 (15') in 305mm increments		Up to 8 ton axle loading

Mixing/Safety Slats

Mixing slats allow for a convenient and safe access to mix or pump slurry from the tank below. Standard mixing slats come complete with concrete inserts and a hinged galvanised grid; galvanised inserts are available upon request. The mixing slat with the larger opening, is a better choice for modern day pumps. Mixing slats are available in the same length options as our slats. Solid Mixing Slabs are also available.



Width (mm)	Depth (mm)	Length (mm)	Opening (mm)	Loading Capacity	
1290	178 (7")	2440 (8') - 3960 (15') in 150mm increments	1000 x 940	 	Up to 4.5 ton axle loading Up to 6.5 ton axle loading
1100	178 (7")	1525 (5') - 3960 (13') in 150mm increments	900 x 790		Up to 3.5 ton axle loading
1290	250 (10")	3050 (10') - 4572 (15') in 305mm increments	1000 x 940	 	Up to 10 ton axle loading
		5000 (16'4")			

Prestressed Passage Covers

Typically used in feed passages and are specifically designed to withstand the loading demands of modern feed mixer wagons. Standard lengths are available up to **4875mm (16')**, with widths of **1200mm** and **600mm**, and a typical depth of **150mm (6")**. Other sizes can be supplied on request.

Each unit features a tongue and groove joint to simplify installation. Galvanised lids are available to facilitate mixing.

A loading capacity of up to 10 tonnes can be achieved with the application of a structural screed—please contact our Agri Sales Team for further information.



Prestressed Support Beams

Support Beams are manufactured at **300mm** square, with lengths ranging from **1830mm (6') - 4572mm (15')** in 305mm increments. Heavy Duty beams are available offering a loading capacity of up to 10 ton.

SUSPENDED FLOORING SYSTEMS

Cubicle Bases

Single and **double (head-to-head)** sloping cubicle bases are available in a range of lengths to accommodate cows of different sizes. Each base is designed with a **slope** to improve drainage, enhance cow comfort, and promote natural lying behaviour, supporting overall animal welfare and performance. Bases can be **suspended** over underground slurry tanks, helping to maximise available storage space within the building. Delivered ready to install, they offer an efficient, labour-saving solution. Precast cubicle bases are compatible with both post-mounted and rail-mounted cubicle systems.



Cubicle Type	Length (mm)	Width (mm)	Min Head Height (mm)	Min Heel Height (mm)
Single - Wet Cast	2135 (7') - 2745 (9')	1143	280	190
Single - Dry Cast	2135 (7') - 2745 (9')	1143	230	150
Double Sloping	4270 (14') - 5485 (18')	1143	255	180

Cubicle End Wall


Cubicle end walls complement the range of cubicle bases on offer, providing an efficient and durable way to finish off cubicle runs. Each end wall is designed to form half the width of a cubicle base, enhancing stability. With chamfered edges and rounded corners, they are both aesthetically pleasing and help minimise the risk of injury to animals. Available up to 2745mm (9') long, Double Sloping Cubicle Bases require two end walls to complete an end.



In House Water Trough

The curved, narrow design of the drinking trough provides a capacity of **455 litres** (100 gallons) and measures **2135mm** in length by **675mm** in width. Its shape optimises space within the cubicle house, allowing troughs to be easily located in walkways. Rounded corners and quick and efficient emptying through a 75mm bung ensuring the availability of fresh clean water, crucial for overall cow health.

Single Slats

Slat Type	Width (mm)	Depth (mm)	Length (mm)	Loading Capacity	
Single Slat	125 - 210	150 (6")	2135 (7') - 2895 (9')		Up to 800kg
	125 - 210	178 (7")	2895 (9'6") - 3200 (10'6")		

Diagonal Slats for Slurry Channel - refer to Slurry Transfer Channel Brochure



Moore Concrete Products Ltd, Caherty House, 41 Woodside Road, Ballymena, County Antrim, Northern Ireland BT42 4QH

Tel: +44 (0) 28 2565 2566

Website: www.moore-concrete.com **Email:** sales@moore-concrete.com

INVESTORS IN PEOPLE®
We invest in people Platinum

