

OX STRAIN POST®

OX POST



Ox Fence Range

Ox Fence Timberless Fencing Solution



Easy to install using most standard post drivers when used in combination with a Top Hat for the **Ox Strain** and Ox Cup for the **Ox Post**. Both are the hat and cup are available through Moore Concrete Stockists. A rock spike should be used in advance of installation if ground conditions deem necessary.



Aesthetically pleasing finish combined **Ox Strain** and **Ox Post** create an extremely aesthetically pleasing finish when used on the same fencing project.



Recycled plastic fixing strip cast on one face of both the **Ox Strain** and **Ox Post** allowing wire to be stapled directly to the post.



Ox Strain Post® Key Features

Reinforced concrete **Ox Strain Posts** are octagonal shaped strainer posts ideal for agricultural fencing. Registered Design— No.004379535-0001



Easy to install each post has a M16 socket is cast into the top, used in conjunction with a lifting loop for ease of handling.



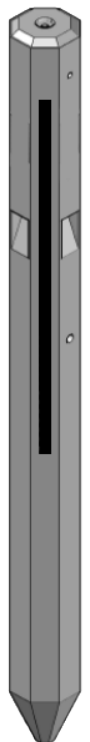
Durability and Strength 50 year design life assuming installation follows manufacturers guidelines. CE Manufactured to BS EN12839.



Stability Notches for struts are cast into three sides allowing flexibility for strut placement.



Octagonal Design creates the optimum post shape wire can be easily wrapped around the post.



Product Type	Length	Cross Section	Weight (kg)
Ox Strain Post	3050 (10')	200 x 200 (8" x 8")	235
	2590 (8'6")	200 x 200 (8" x 8")	200
	2135 (7')	200 x 200 (8" x 8")	165
Ox Strain Strut	1830 (6')	100 x 75 (4" x 3")	30

OX STRAIN POST®

OX POST

Ox Post & Gate Posts

Ox Post® Key Features

Ox Post is the intermediate concrete fencing post inspired by the success of **Ox Strain**.

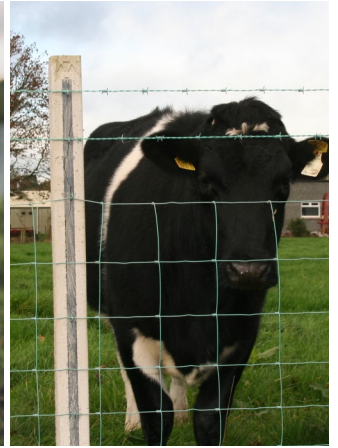
Ox Post is a **strong, durable, timberless** fencing solution.

Registered Design No 008026785-0001

Durability and Strength

Up to 30 years design life. CE Manufactured to BS EN12839.

	Length	Cross Section	Weight (kg)
Ox Post	1830 (6')	100 x 75 (4" x 3")	31



Gate Posts

Standard Gate Post



Country Gate Post



	Length	Cross Section	Weight (kg)
Gate Post 7"	2135 (7')	178 x 178 (7" x 7")	152
Gate Post 8"	2135 (7')	200 x 200 (8" x 8")	197
Country Gate Post	2285 (7'6")	Bottom—384 x 384 (15" x 15") - Top 254 x 254 (10" x 10")	640