

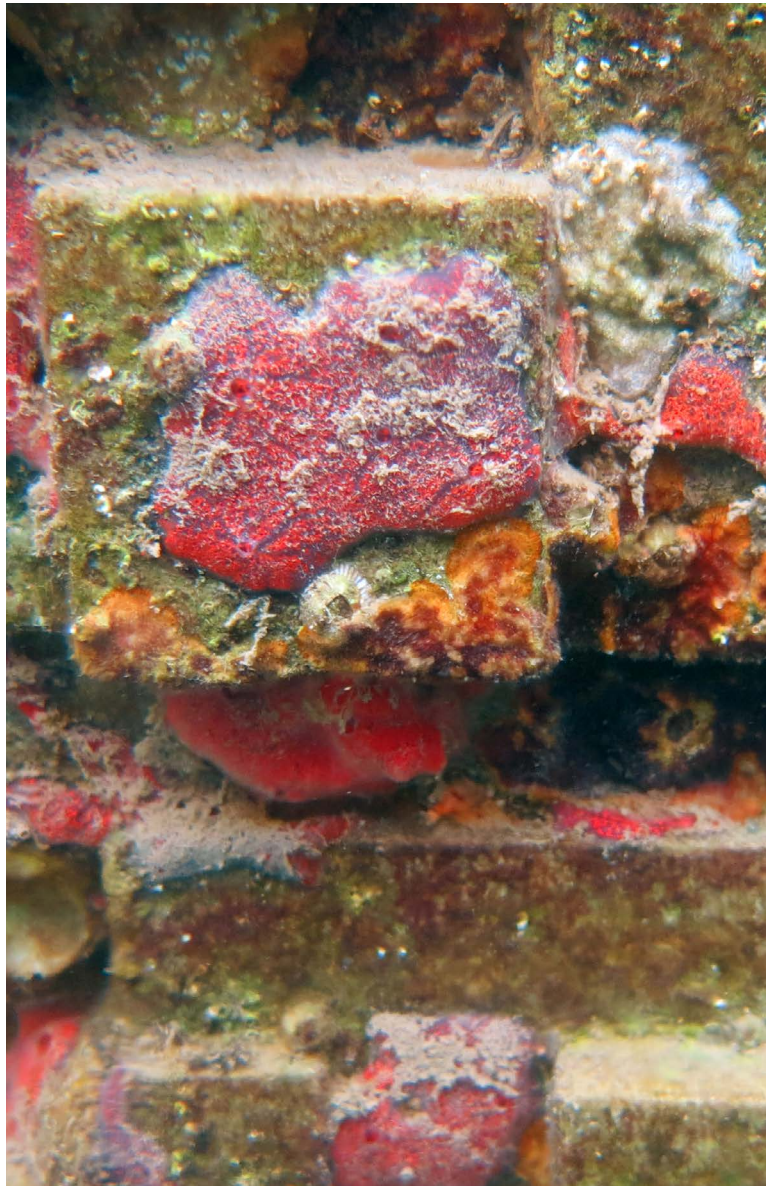
Approved Preferred Manufacturer & Distributor of EConcrete

ECONcrete®

SEA WALL

EConcrete® produces a range of modular sea wall elements which functionally integrate into coastal and marine infrastructure.

The unique properties of EConcrete® elements support the growth of targeted marine organisms through design alteration and chemical modification of the concrete mix. These alterations do not affect the structural and functional properties of the sea wall, while adding strength, reducing maintenance, and increasing life span of the sea wall as biogenic material accumulates providing bioprotection.



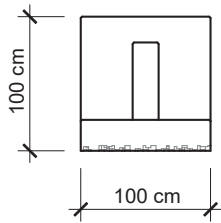
Unit Width (cm)	Wall Width (cm)	Unit Height (cm)	Volume (Litres)	Weight (Kg)
100 (3')	20 (0.6')	400 (13')	1,100 (1.4 yd ³)	2,600 (5800 lbs)

ECONcrete[®] Sea Wall's dimensions can be fitted to specific project requirements.

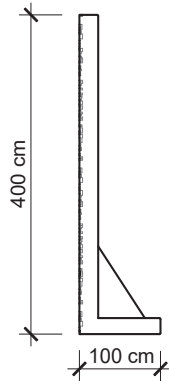
The specific concrete matrix used for the casting will be defined according to the project's distinct constructive and biological requirements.



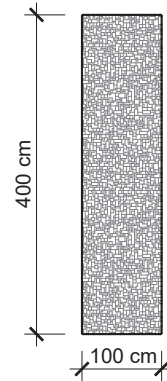
Top view



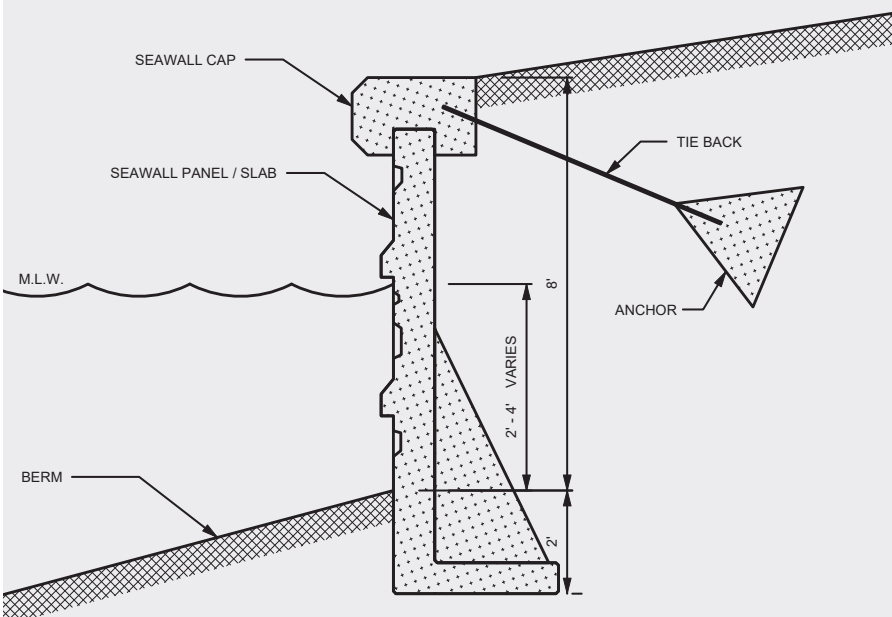
Side view



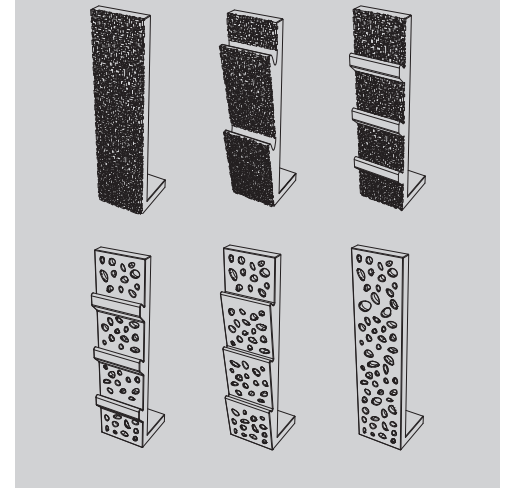
Front view



ECONcrete[®]'s Sea Walls design can be modified to accommodate various anchoring methods used in the industry.



The Sea Walls' surface textures can be modified according to the project's design theme bringing the environmental considerations into account.



COPYRIGHT: The concepts and information contained in this document are the copyright of ECONcrete Tech LTD. Use or copying of the document in whole or part without the written permission of ECONcrete Tech LTD constitutes an infringement of copyright.