

Approved Preferred Manufacturer & Distributor of EConcrete

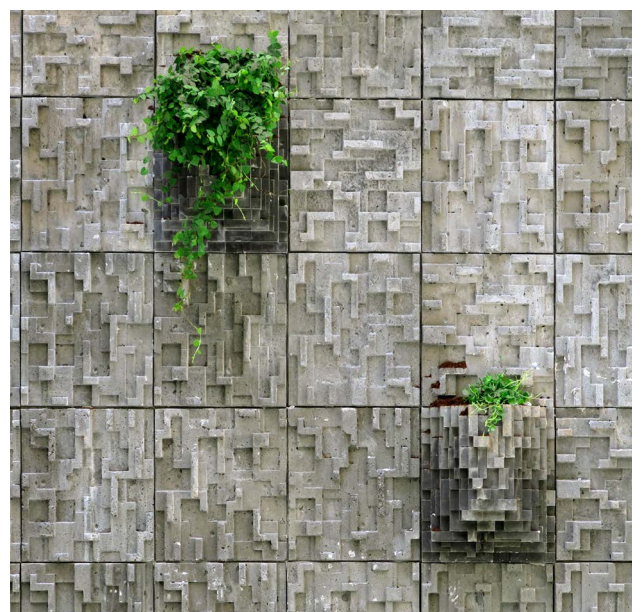
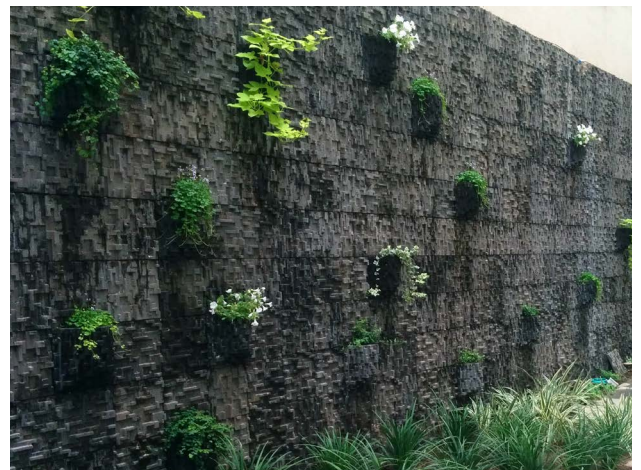
ECONcrete®

BIO ACTIVE WALL

Bio-active wall elements are designed to induce rapid plant wall coverage of inland buildings. Green plant coverage significantly improves urban landscape, provides cleaner and healthier air, and reduces the ecological footprint of urban development.

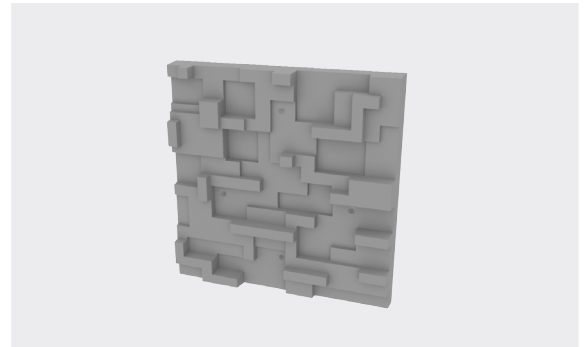
The physical and chemical properties of the wall elements strongly influence the capability to support and enhance growth. EConcrete®'s bio-active wall induces natural growth of wall clinging plants, endolithic algae, lichens and mosses. Its high complexity and porosity create moist niches that support flora, without the need for complex soil systems.

EConcrete®'s Bio-active wall elements are a great solution for areas like sunken gardens and facades, and can integrate planting pockets for increasing green coverage.

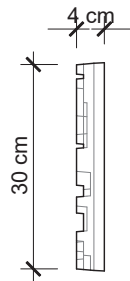


Standard Tile

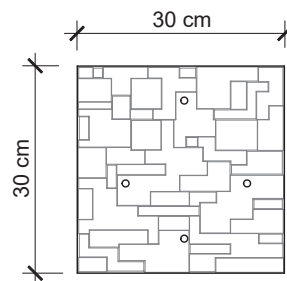
| Unit Height (cm) | Unit Width (cm) | Unit Depth (cm) | Volume (Litres) | Weight (Kg) |
|------------------|-----------------|-----------------|-------------------------------|-------------------|
| 30 (12") | 30 (12") | 4 (1.6") | 2.3 (140 in ³) | 5.6 (12.3 lbs) |



Side view

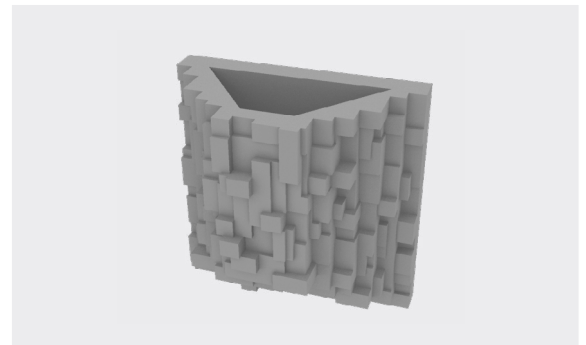


Front view

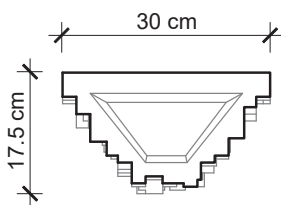


Pocket Tile

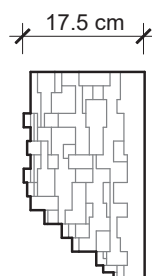
| Unit Height (cm) | Unit Width (cm) | Unit Depth (cm) | Volume (Litres) | Weight (Kg) |
|------------------|-----------------|-----------------|-------------------------------|----------------|
| 30 (12") | 30 (12") | 17.5 (7") | 6.2 (378 in ³) | 15 (33 lbs) |



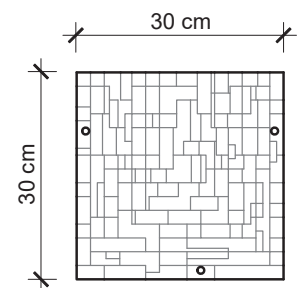
Top view



Side view



Front view



ECONcrete® Bio Active wall Tile's dimensions can be fitted to specific project requirements.

The specific concrete matrix used for the casting is defined according to the project's distinct constructive and biological requirements.

COPYRIGHT: The concepts and information contained in this document are the copyright of ECONcrete Tech LTD. Use or copying of the document in whole or part without the written permission of ECONcrete Tech LTD constitutes an infringement of copyright.