



# MOORECONCRETE

## BUNKER WALL



### Precast bunker walls

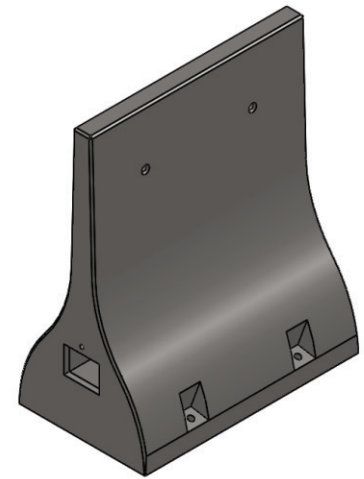
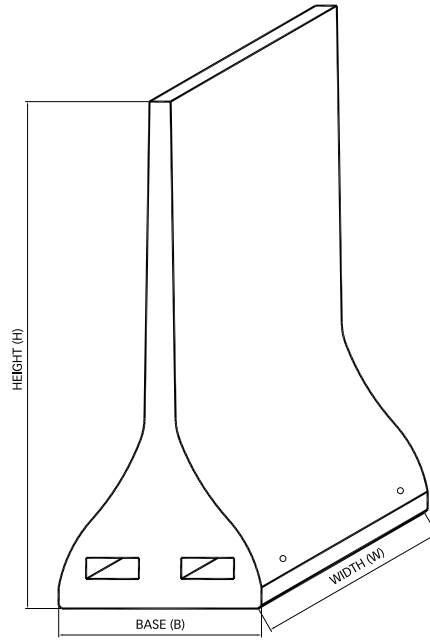
Ideal for the storage of grain, fertiliser, aggregate, solid fuel, silage and waste materials

[www.moore-concrete.com](http://www.moore-concrete.com)



CE Manufactured to EN 15258

# BUNKER WALL



**1500 high version**

**Registered Design - No. 001647983-0001**

## TABLE OF SIZES

Height	Width	Base	Weight
1500 (5')	1200	710	1211kg
2400 (8') *	1200	960	2065kg
3000 (10') *	1200	1130	2790kg
3600 (12')	1200	1130	3017kg
4000 (13')	1200	1130	3550kg
4300 (14')	1200	1130	3675kg

\* Heavier profile wall available for silage loading



Manufactured to EN 15258



## FEATURES & BENEFITS:

- **Storage** – suitable for the storage of bulk materials.
- **Bolting down** – up to 3.0m (10') the walls do not need bolted down when retaining material which has a density of less than 12kn/m<sup>3</sup>. This includes grain, solid fuels, recycling materials, woodchip, potatoes etc.
- **Silage** – a heavier profile wall is available and can be used to retain silage up to 3.0m (10'). The wall will need to be bolted to a suitably reinforced slab.
- **Versatility** – forklift recesses allow the wall to be installed rapidly and re-positioned easily as required.
- **Loading** – each unit is load bearing in 2 directions.
- **Unique shape** – developed to allow the free flow of materials to the very bottom of the silo.
- **Corner units** – also available, allowing bays to be formed.
- **Optional** – bolt down kits and lifting equipment can also be supplied.

Moore Concrete Products Ltd, Caherty House, 41 Woodside Road,  
Ballymena, County Antrim, Northern Ireland BT42 4QH

**Tel:** +44 (0) 28 2565 2566 **Fax:** +44 (0) 28 2565 8480

**Web:** [www.moore-concrete.com](http://www.moore-concrete.com) **Email:** [sales@moore-concrete.com](mailto:sales@moore-concrete.com)



**INVESTORS IN PEOPLE®**  
We invest in people Gold