



MOORECONCRETE

ABOVE GROUND SLURRY STORE



Ideal farm based slurry storage system

ECONOMIC | RELIABLE | DURABLE

Up to 4700m³ capacity (1 million gallon)

www.moore-concrete.com



ABOVE GROUND SLURRY STORE

The Moore Concrete Above Ground Slurry store offers the optimum combination of economy, reliability and durability.

The post tensioned tank is designed and constructed in accordance with proved Danish technology. This tried & tested system has been in use for over 30 years.



Key Features

- Complies with the requirements of BS5502-50 - Code of Practice for Design, Construction & use of storage tanks & reception pits
- Compliant with Nitrate Vulnerable Zones (NVZ) & Storing silage, Slurry and Agricultural fuel oil (SSAFO) regulations
- Available in 3 heights – 4.0, 5.0m & 6.0m giving a wide range of capacities - 337m³ (74,140 Gallon) – 4700m³ (1,034,000 Gallon)
- Inlet & outlets can be cast into Store Elements to facilitate pipes, mixers & drawoffs
- Post Tensioned Cables are encased in a greased PVC sheath to protect them for the lifetime of the store without maintenance
- Precast concrete store elements are manufactured in controlled factory conditions to ISO 9001 quality standards
- Flexibility to allow retro fitting of a Soft Cover at a later date if required
- Stores can be partially or fully submerged into the ground, subject to consultation & design by a Chartered Engineer

Construction Timeline:

The Moore Concrete Slurry Store is extremely quick to install. The client selects and clears the site for the Slurry Store. Our engineer inspects the ground and specifies stone requirements. When this has been laid and compacted the Moore Concrete team arrive on site.

RAPID INSTALLATION

| | | | | | | | | |
|-------|-------|--------------------------------------|-------|--------|--------|--------|--|--------|
| DAY 1 | DAY 2 | 7 DAY CURING PERIOD CONCRETE BASE | DAY 9 | DAY 10 | DAY 11 | DAY 12 | 7 DAY CURING PERIOD CONCRETE RINGBEAM | DAY 19 |
|-------|-------|--------------------------------------|-------|--------|--------|--------|--|--------|

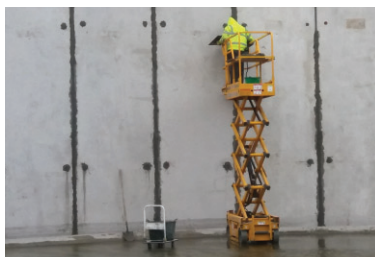
Day 1: Setup base for store **Day 2:** Pour concrete base for store

Day 9&10: Placement of Vertical Wall Elements, Placement of Post-Tensioning Cables & Initial Stressing

Day 11&12: Sealing of Vertical Joints with Expansive Mortar. Pouring of Ring Beam

Day 19: Final stressing of Post-Tensioning Cables. Tank is now ready to be filled with slurry

(Timeline subject to weather and size of store)



QUALITYPRECASTSOLUTIONS

DURABLE CONSTRUCTION

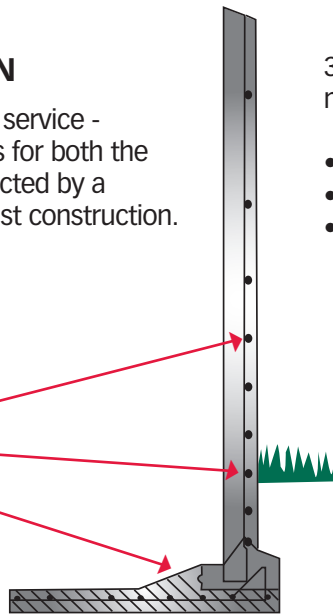
Moore Concrete offer a complete service - supply & construction of materials for both the base & store. Every store is inspected by a Chartered Engineer both pre & post construction.

3 part seal ensures all joints are in compression and maintenance free for life of the store

- Bitumen strip between each panel
- Post tensioned cable
- Expansive mortar

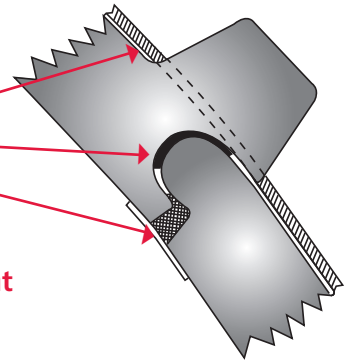
STEEL TENSIONING CABLES
PRECAST CONCRETE ELEMENT
INSITU CONCRETE BASE

Section of Tank Wall



STEEL TENSIONING CABLES
JOINT PACKING
EXPANSIVE MORTAR

Detail of Sealed Joint



COVERS & OPTIONAL ANCILLARY EQUIPMENT

SOFT TANK COVER

Lundsby Soft Cover is a tried & tested patented product which has been installed to tanks throughout Europe. The covers ensure a durable & effective seal for the tank, keeping out rainwater and therefore increasing slurry capacity. The cover can be installed either at the erection of the new tank or retro fitted at a later date. Whilst in many regions a cover is an option, in Northern Ireland it is a legal requirement.

The Cover is

- Mounted on a Heavy Duty Centralised Mast
- Fixed to the tank edge using a unique fitting avoiding wear & tear from the trim
- UV, Slurry & weather resistant
- Hatches can be incorporated to provide a work opening.



MIXING AND DRAWING OFF

Moore Concrete Slurry Stores can be provided with efficient mixing equipment including:

- Platform, Ladder & Jetter • Reception Tank • Side Stirrer
- 150mm Underwall or Through the Wall Draw off, including x2 150mm Valves



BACKFILLING AND SUBMERGING OF TANKS

Tanks can be backfilled on one side of the store to a maximum height of 1m, greater heights should be discussed and agreed prior to erection. This allows additional options as to the choice of site for the Above Ground Store.

Tanks can also be partially or fully buried in the ground with prior consultation and agreement. Following inspection of the ground and a test pit, our engineer would confirm the technical specifications.



MOORECONCRETE

ABOVE GROUND SLURRY STORE



TANK DATA

The tank is available in 3 heights: 4m high elements (up to 692,560 gallons),
5m high elements (up to 863,280 gallons) and 6m high elements (up to 1,034,000 gallons).

| 4m high elements | | 5m high elements | | 6m high elements | | Elements | Diameter of tank | Diameter of concrete base | Diameter of excavation | Footprint area of concrete base |
|------------------|---------------|------------------|---------------|------------------|---------------|----------|------------------|---------------------------|------------------------|---------------------------------|
| Tank Volume | Tank Capacity | Tank Volume | Tank Capacity | Tank Volume | Tank Capacity | | | | | |
| m ³ | Gallons | m ³ | Gallons | m ³ | Gallons | Number | m | m | m | m ² |
| 337 | 74,140 | 420 | 92,400 | 504 | 110,880 | 18 | 10.32 | 10.88 | 12.88 | 93 |
| 376 | 82,720 | 468 | 102,960 | 561 | 123,420 | 19 | 10.88 | 11.44 | 13.44 | 103 |
| 417 | 91,740 | 519 | 114,180 | 622 | 136,840 | 20 | 11.44 | 12.02 | 14.00 | 114 |
| 459 | 100,980 | 572 | 125,840 | 685 | 150,700 | 21 | 12.02 | 12.58 | 14.58 | 125 |
| 504 | 110,880 | 628 | 138,160 | 752 | 165,440 | 22 | 12.58 | 13.14 | 15.14 | 136 |
| 551 | 121,220 | 686 | 150,920 | 822 | 180,840 | 23 | 13.16 | 13.96 | 15.96 | 153 |
| 600 | 132,000 | 747 | 164,340 | 895 | 196,900 | 24 | 13.72 | 14.28 | 16.28 | 160 |
| 650 | 143,000 | 811 | 178,420 | 971 | 213,620 | 25 | 14.30 | 14.86 | 16.86 | 174 |
| 703 | 154,660 | 877 | 192,940 | 1,051 | 231,220 | 26 | 14.86 | 15.42 | 17.42 | 187 |
| 758 | 166,760 | 946 | 208,120 | 1,133 | 249,260 | 27 | 15.42 | 16.00 | 18.00 | 201 |
| 815 | 179,300 | 1,017 | 223,740 | 1,218 | 267,960 | 28 | 16.00 | 16.56 | 18.56 | 216 |
| 876 | 192,720 | 1,091 | 240,020 | 1,307 | 287,540 | 29 | 16.56 | 17.14 | 19.20 | 231 |
| 937 | 206,140 | 1,167 | 256,740 | 1,400 | 308,000 | 30 | 17.14 | 17.70 | 19.70 | 246 |
| 1,000 | 220,000 | 1,247 | 274,340 | 1,493 | 328,460 | 31 | 17.70 | 18.26 | 20.26 | 262 |
| 1,066 | 234,520 | 1,328 | 292,160 | 1,591 | 350,020 | 32 | 18.28 | 18.84 | 20.84 | 279 |
| 1,134 | 249,480 | 1,413 | 310,860 | 1,692 | 372,240 | 33 | 18.84 | 19.40 | 21.40 | 296 |
| 1,203 | 264,660 | 1,500 | 330,000 | 1,796 | 395,120 | 34 | 19.42 | 20.00 | 22.00 | 314 |
| 1,275 | 280,500 | 1,589 | 349,580 | 1,904 | 418,880 | 35 | 19.98 | 20.54 | 22.54 | 332 |
| 1,349 | 296,780 | 1,681 | 369,820 | 2,014 | 443,080 | 36 | 20.56 | 21.12 | 23.12 | 351 |
| 1,424 | 313,280 | 1,776 | 390,720 | 2,128 | 468,160 | 37 | 21.12 | 21.68 | 23.68 | 369 |
| 1,503 | 330,660 | 1,873 | 412,060 | 2,244 | 493,680 | 38 | 21.64 | 22.26 | 24.20 | 389 |
| 1,583 | 348,260 | 1,973 | 434,060 | 2,364 | 520,080 | 39 | 22.18 | 22.82 | 24.82 | 409 |
| 1,665 | 366,300 | 2,076 | 456,720 | 2,486 | 546,920 | 40 | 22.78 | 23.40 | 25.40 | 430 |
| 1,750 | 385,000 | 2,181 | 479,820 | 2,612 | 574,640 | 41 | 23.34 | 23.94 | 25.94 | 450 |
| 1,836 | 403,920 | 2,288 | 503,360 | 2,741 | 603,020 | 42 | 23.88 | 24.54 | 26.54 | 473 |
| 1,924 | 423,280 | 2,400 | 528,000 | 2,873 | 632,060 | 43 | 24.46 | 25.08 | 27.08 | 494 |
| 2,015 | 443,300 | 2,511 | 552,420 | 3,009 | 661,980 | 44 | 25.02 | 25.68 | 27.68 | 518 |
| 2,108 | 463,760 | 2,627 | 577,940 | 3,147 | 692,340 | 45 | 25.60 | 26.22 | 28.20 | 540 |
| 2,203 | 484,660 | 2,745 | 603,900 | 3,288 | 723,360 | 46 | 26.14 | 26.82 | 28.82 | 565 |
| 2,300 | 506,000 | 2,865 | 630,300 | 3,433 | 755,260 | 47 | 26.70 | 27.36 | 29.36 | 588 |
| 2,398 | 527,560 | 2,989 | 657,580 | 3,581 | 787,820 | 48 | 27.30 | 27.96 | 29.96 | 614 |
| 2,499 | 549,780 | 3,115 | 685,300 | 3,731 | 820,820 | 49 | 27.88 | 28.54 | 30.54 | 639 |
| 2,601 | 572,220 | 3,243 | 713,460 | 3,885 | 854,700 | 50 | 28.38 | 29.12 | 31.12 | 666 |
| 2,707 | 595,540 | 3,374 | 742,280 | 4,042 | 889,240 | 51 | 29.00 | 29.96 | 31.68 | 692 |
| 2,814 | 619,080 | 3,508 | 771,760 | 4,202 | 924,440 | 52 | 29.56 | 30.24 | 32.24 | 718 |
| 2,924 | 643,280 | 3,644 | 801,680 | 4,365 | 960,300 | 53 | 30.14 | 30.82 | 32.82 | 746 |
| 3,035 | 667,700 | 3,783 | 832,260 | 4,532 | 997,040 | 54 | 30.72 | 31.40 | 33.40 | 774 |
| 3,148 | 692,560 | 3,924 | 863,280 | 4,700 | 1,034,000 | 55 | 31.26 | 31.96 | 33.96 | 802 |

NOTE: The above capacities are the total gross capacities of the tanks.
Customers should be aware of local requirements concerning allowances for freeboard and rainfall.
For further information please contact the Moore Concrete Sales Team.

Moore Concrete Products Ltd, Caherty House, 41 Woodside Road,
Ballymena, County Antrim, Northern Ireland BT42 4QH

Tel: +44 (0) 28 2565 2566 Fax: +44 (0) 28 2565 8480

Web: www.moore-concrete.com Email: info@moore-concrete.com



INVESTORS IN PEOPLE
We invest in people Gold