

MOORE CONCRETE

Project Title- Bow Street Station

Year: 2020-2021

Client: TFW

Main Contactor: Alun Griffiths

Moore Concrete Project Value: £137k



In February 2021, Bow Street Station in Aberystwyth Wales welcomed the first train for 56 years after an £8m refurbishment project. The original Bow Street Station closed in 1965 and is now home to a builder's merchant. The reopening of Bow Street Station on the Cambrian Line connects Aberystwyth and Pwllheli to Birmingham and Shrewsbury.

Moore Concrete manufactured approximately 390 tonnes of precast units for this project over various phases including platform units and retaining walls as well as an access ramp.

As a company Moore Concrete has an ethos of working together with our clients/contractors in a collaborative way using an Integrated Project Team (IPT).

In the Bow Street project an early engagement approach with Alun Griffiths Contractors Limited allowed us to participate in a number of project meetings to discuss design, operational efficiency and improved project programming.



Figure 1: Ramp Units Installed, Bow Street Station



Figure 2: Bow Street Station

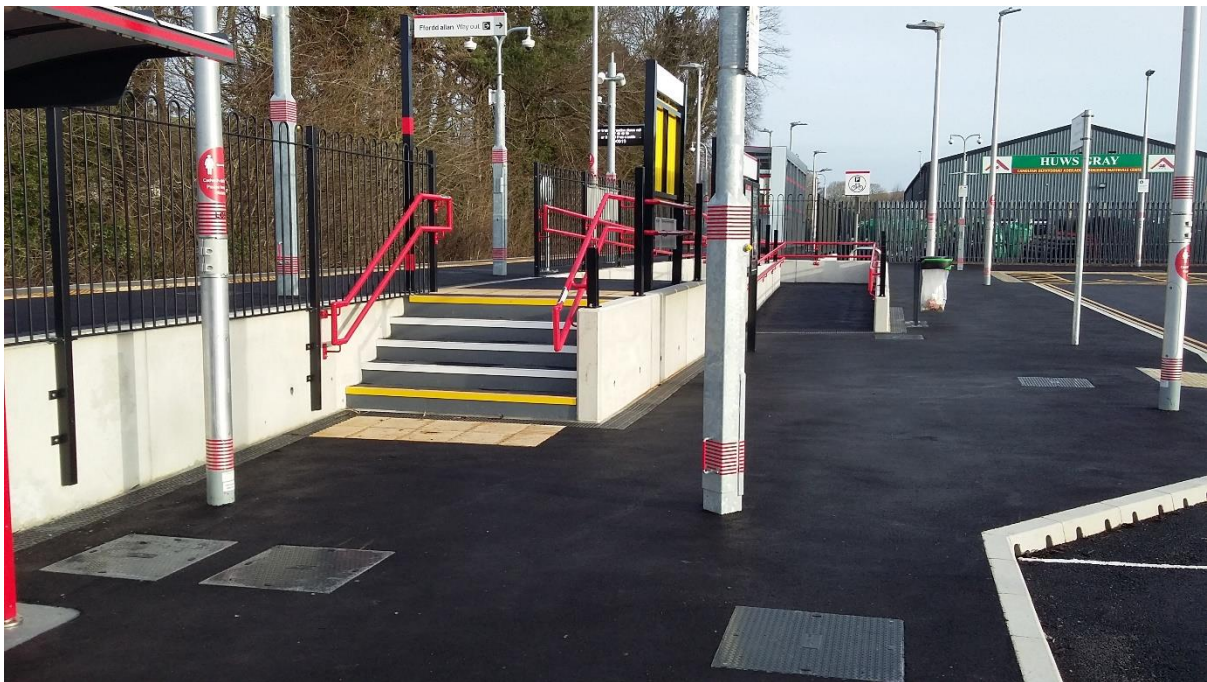


Figure 3: Access Ramp Bow Street Station



Figure 4: Access Ramp Installation Bow Street Station