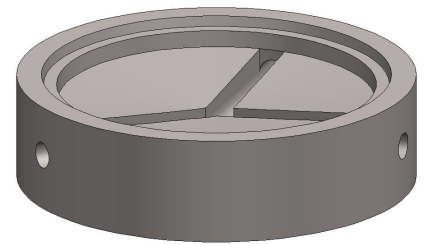


Moore Concrete's 1200mm diameter QuikBase is a safe and efficient solution to installing a manhole. Each base is bespoke and designed with channels and holes to suit the size of pipes being inserted onsite. This means:

- No drilling
- No haunching
- No forming



Simply drop your QuikBase into position and insert the pipes.

### Key Features:

- 1200mm internal diameter
- 150mm wide walls
- Hole sizes available from 100mm to 300mm to suit pipe requirements
- Tongue and groove joint to suit Moore Concrete 1200mm diameter manhole rings
- 1:12 gradient haunch

