

Plants Suitable for EConcrete Planter Tile **By Linda McKeown from Blueleaf Garden Design**

Exclusive Manufacturer & Distributor of

ECOncrete®

Apart from the mosses which will build up on the tile, below is a list of suitable plants for the planter tile. Probably best planted at 9cm pot size (p9), drainage is required in the planter, which can be achieved by drilling a 5mm hole in the base of the pocket.



South Facing Sunny Aspect

***Alyssum montanum* (Mountain Madwort)**

Bright golden flowers
 Attractive grey-green foliage
 Sow March-July
 Flower April-June
 Hardy perennial
 Height 7.5cm



***Arabis* (Mountain Rock Cress)**

Pink or white flowers
 Evergreen
 Sow March-July
 Flower March - May
 Perennial
 Height 15cm to 20cm
 Width 30cm to 50cm



***Iberis sempervirens* (Perennial Candytuft)**

Cascades White flowers
 Evergreen
 Sow March-Sept
 Flower June-August
 Alpine Perennial Herbaceous
 Height 10cm to 25cm
 Width 40cm to 60cm



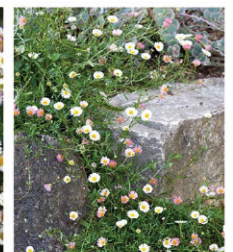
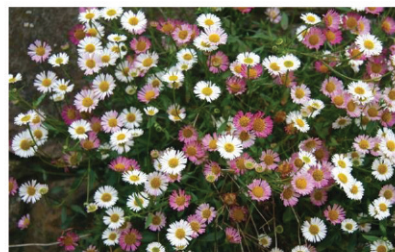
***Campanula poscharskyana* (Trailing Bellflower)**

Lavender / Blue flowers
 Semi Evergreen
 Sow March-Sept
 Flower Summer-Autumn
 Hardy Trailing Perennial
 Height up to 10cm
 Width 10cm to 50cm



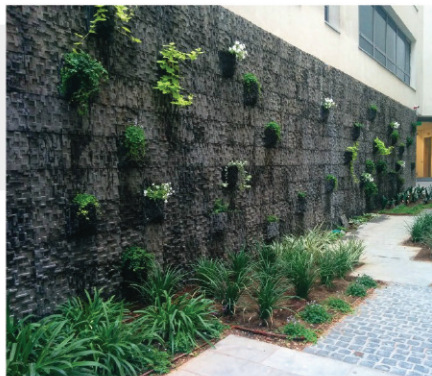
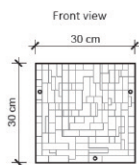
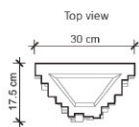
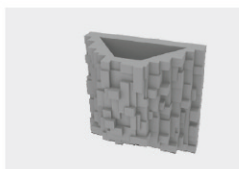
***Erigeron karvinsianus* (Mexican Daisy)**

Multi-coloured pink & white flowers
 Classified as weed
 Flowers nearly year around



Pocket Tile

Unit Height (cm)	Unit Width (cm)	Unit Depth (cm)	Volume (Litres)	Weight (Kg)
30 (12")	30 (12")	17.5 (7")	6.2 (378 In³)	15 (33 lbs)



**MOORE
CONCRETE**

Exclusive Manufacturer & Distributor of

ECOncrete®

Blueleaf
Garden Design

Saxifraga x urbium (London Pride)

Pink or white flowers

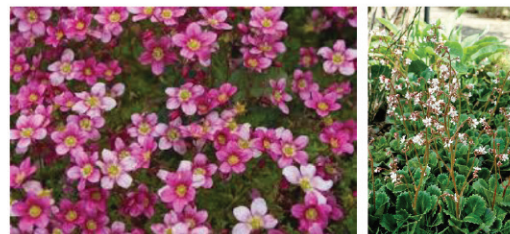
Evergreen

Flower Summer

Perennial Hardy in most of UK

Height 10cm to 30cm

Width 50cm to 100cm



Sedum acre (biting stonecrop 'Golden Queen')

Bright Yellow Star Shaped Flowers

Evergreen

Flower Summer or Autumn

Perennial Hardy in severest European climates
down to -20°C

Height up to 10cm

Width 50cm to 1m



Thymus vulgaris (Garden Thyme)

Pink, Purple or White Tubular Shaped Flowers

Evergreen Dark Green Grey Leaves

Flower Early Summer

Bushy Perennial Hardy in most of the UK down to -10°C

Height 10cm to 50cm

Width 10cm to 50cm



North Facing Shady Aspect

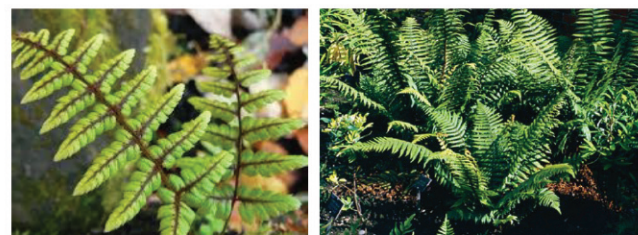
Dryopteris wallichiana (Alpine Wood Fern)

Hardy Fern

In spring produces bright green shuttlecock like fronds

Height up to 90cm

Width 75cm



Epimedium x rubrum (Red Barrenwort)

Open sprays of small red tinted bowl shaped flowers

Deciduous or Evergreen

Flower Spring

Perennial Hardy in severest European climates

down to -20°C

Height 10cm to 50cm

Width 10cm to 50cm



Hedera helix (Ivy)

Clusters of small yellow green flowers

Evergreen climbing shrub

Propagate by semi-hardwood cuttings in summer

Flower Autumn

Perennial Hardy in most of the UK down to -10°C

Height 8m to 12m

Width 2.5m to 4m

